

[Subscribe](#)

[Past Issues](#)

[Translate](#) ▼



# 2024 A YEAR in review

Last year, we accomplished...

An illustration of a yellow watering can with blue dashed lines representing water being sprayed. To the right, a row of green trees sits atop a green rectangular background. The text 'watering our neighborhood's trees 3,622 times' is written in white on the green background.

A blue rectangular background with a paintbrush illustration on the right side. The text 'removing 19,804 graffiti tags...' is written in white on the left side.

that's approximately 990

...that's approximately 770 gallons of paint used!



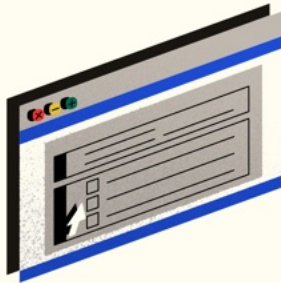
We are immensely proud of everything we have achieved in the past year. Here's looking to a successful 2025!



# NEIGHBORHOOD COUNCIL ELECTION

April 22, 2025

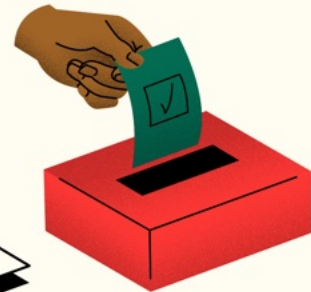
LA Neighborhood Councils (NCs) advise City decision makers, like our Councilmember and Mayor on the needs of our community. Neighborhood Council Board Members are elected by the community. This year, voting will be exclusively vote-by-mail.



## HOW TO REGISTER

To register to vote and receive a ballot, complete an online vote-by-mail application or mail a printed application form to the city clerk office, both available at [clerk.lacity.org/elections](http://clerk.lacity.org/elections).

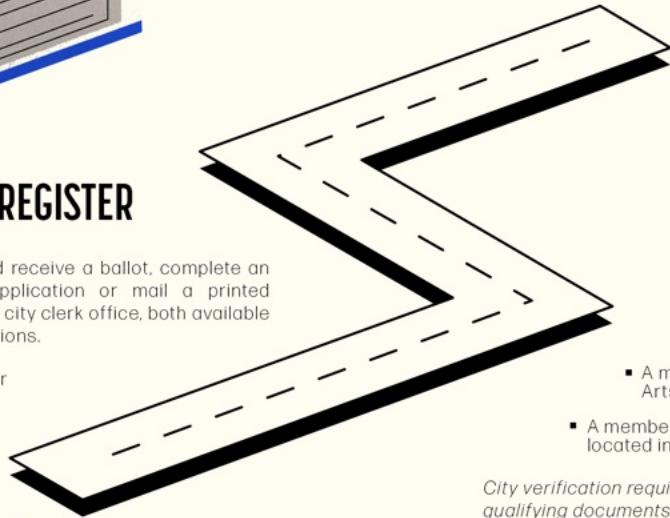
The last day to apply for a ballot is **April 15**.



## WHO CAN VOTE

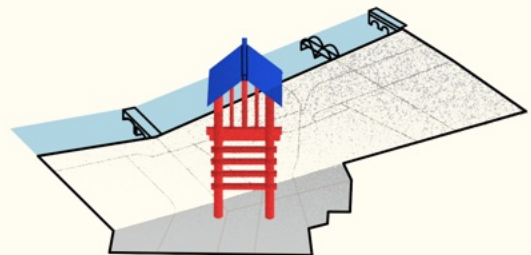
- Residents
- Property owners
- Business owners
- Anyone who works in the Arts District or Little Tokyo
- A member of a non-profit based in the Arts District or Little Tokyo
- A member of a faith-based institution located in the Arts District or Little Tokyo

*City verification required, check website for qualifying documents*



## HOW TO VOTE

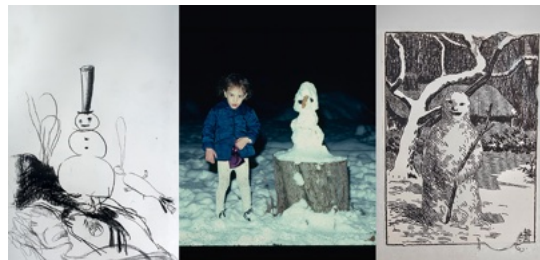
After completing your ballot, it can be mailed back via the provided return envelope, or taken to a ballot drop off box. Ballots must be post marked or dropped off by **April 22**.



**FOR MORE INFO ON CANDIDATES AND VOTING, VISIT [CLERK.LACITY.ORG](http://CLERK.LACITY.ORG)**

[Learn More](#)

## Cultural Events



### **Julien Bismuth's *Perchings***

#### **The Box**

On view until January 18

"For the past years, I have been working in errant ways...always in pursuit of horizons rather than targets. A horizon is something you never reach. At sea, the horizon always remains 4.8 km away.

This is an attempt to consolidate a position from within that drift."



### **Annie Briard's *Through the Walls of Gold***

#### **Royale Projects**

On view until February 8

Rooted in conceptual photography, analog technologies and Light and Space, this series, *Through the Walls of Gold*, asks us to reconsider the workings of visual perception and how it shapes our surrounding existence.

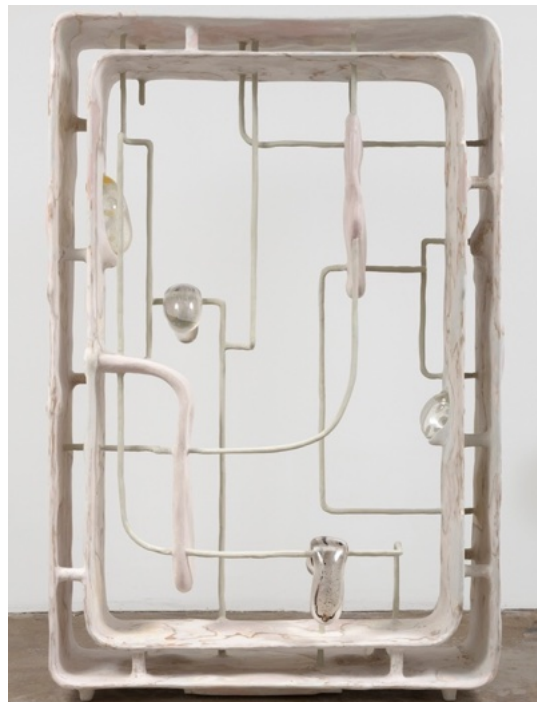
### ***Nature's Pulse***

#### **Art Share L.A.**

On view until February 15



*Nature's Pulse* is an exhibition that explores the powerful and intricate relationship between humanity and nature.



***Scientia Sexualis***

ICA LA

On view until March 2

*Scientia Sexualis* is an ambitious group survey of contemporary artists whose work confronts, dissolves, and reimagines sex and gender within the scientific apparatus.

Public Safety Statistics – Q4		Beautification Statistics – Q4	
Outreach to the unhoused	121	Bags of trash hauled	7,659
Personal safety escorts	32	Bulk items removed	660
Assistance with trespassers	190	Graffiti tags removed	4,362
Public assistance requests	451	Times trees were watered	835
Hours patrolled	6,203	Murals restored	2

## How You Can Help with Wildfire Relief

A week ago, we provided links to where to get resources for the Los Angeles County wildfires and what organizations need attention. We're adding more organizations that we stand behind to that list.

Where should I donate?

- Consider donating money to these organizations:
  - [Los Angeles Fire Department Foundation](#)
  - [Wildfire Recovery Fund](#)
  - [After the Fire USA](#)
  - As the Eaton Fire continues to devastate our community, the [Pasadena Humane Society](#) has taken in over 400 animals and counting. They need monetary donations to purchase medical supplies and resources as they start to see a significant increase in the number of burned and injured animals coming to our shelter.
  - With the multiple fires affecting our neighborhoods in and around the City, [LA Animal Services](#) is asking the community to make monetary donations to support programs to help animals displaced by the fires in evacuation centers and in the six LA City shelters. They are accepting checks only at this time.

Where should I volunteer?

- If you have time, the following groups are organizing to distribute food and resources to those in need:
  - [LA YMCA](#)
  - [No Res Gourmet](#)

Lastly, **we would like to thank all of our first responders and volunteers** who are working tirelessly to help our communities in need.

---

## Need Help Getting the Word Out?

Do you have an upcoming event or important community information you would like us to include in our next newsletter? If so, please email us at [info@ArtsDistrictLA.org](mailto:info@ArtsDistrictLA.org).

---



[www.ArtsDistrictLA.org](http://www.ArtsDistrictLA.org)

1801 East 7th Street  
Los Angeles, CA 90021

[unsubscribe from this list](#) [update subscription preferences](#)

---

This email was sent to [<<Email Address>>](#)  
[why did I get this?](#) [unsubscribe from this list](#) [update subscription preferences](#)  
ADLA · 1801 E. 7th Street · Los Angeles, CA 90021 · USA

